

PrO-Analytical

a division of

CENTURION
SCIENTIFIC LIMITED

Dual centrifuge and rotor

Package centrifuges with rotor included



**General Analytical
Laboratories**

Welcome to our latest Centrifuge range

Centrifuges focused on the future

Micro, small, medium, large & floor ambient with additional refrigerated versions.

Improved angled front panel for ease of use.

Improved rotors for safer sample use

Additional rotors, fixed angles, high speed fixed angles, swing out and micro.

Fixed angle rotors are now supplied with sealed lids, for ultimate safety.

Swing out rotors also have new sealed lids to increase their capacity.

Next generation components

- Inverter
- Efficient with added power, improved acceleration/deceleration
- **Tachometer/Imbalance**
- Third generation offering improved user flexibility
- **Lid Lock system**
- Superior lid locks for safety and reliability
- **Control Board**
- Easier rotor selection with additional display
- Bluetooth addition allowing latest software updates
- Timer now. 0-99mins, 2, 3, 4, 5, 6, 7, 8, 9, hours & constant

Ambient model



Refrigerated model



Centurion Scientific Ltd Centrifuges comply to all relevant EU standards of quality and medical devices IEC61010 and CE conformity test marks emission, immunity to EN/IEC 61326-1, Class B

PrO-Analytical Centrifuge Features

Built to last, these Centrifuges have strong construction yet, offer a sleek modern design that will fit into any modern laboratory.

No compromises on quality, only the best components are used in the manufacturing process.

By working with all our suppliers, our reliability has been retained and improved to give all our range a 2 year warranty as standard.



CE marked and ISO 9001 & 13485

User features to PrO-Analytical series	Advantages
Bright blue LED display	Clarity & ease of use
Rotor recognition	1 rotor only, selected by software
10 acceleration rates & 10 deceleration rates	Sample assistance
99 program memory	Multi department & Users
Timer 0-9 Hours & Hold in 30 second increments	Total flexibility
Pulse short run	Fast pelleting
Run in speed (rpm) or rcf (G) in 10 rpm increments	Accuracy
Orientation acceleration rate	Prevents initial sample side deposits
Sound <60db (rotor dependent)	Quiet

Standard features to PrO-Analytical series	Advantages
Extra thick stainless steel bowl	Easy clean & rust free
Port to lid	Tachometer speed certification
Alloy & steel frame (zinc coated)	Strong light & quiet
World leading industrial grade inverter	Reliability & strength
Best quality European brushless motor	Quiet, cool & reliable
High technology airflow (ambient mode)	Cooler running

All centrifuges have user accessible service sections to access all safety parameters

Safety features to PrO-Analytical series	Advantages
Multi point lid locking	Lid safety
Emergency lid release	Power failure release
Lid Spring Strut	Lid dropping safety
Lid lock detection	To run, lid must be shut
Imbalance detection	Eradicates user loading errors
Overspeed sensor	Safe detection of speed
Set inverter values	Electronic safety of speed
Barrier ring	Safety protection of chamber
Motor overheat sensor	Safe motor protection

Centurion Scientific Ltd Centrifuges comply to all relevant EU standards of quality and medical devices IEC 61010 and CE conformity test marks emission, immunity to EN/IEC 61326-1, Class B

Refrigerated Centrifuges

Dynamics rooted in innovation

Accuracy and control using less power.

How?

Centurion Scientific Ltd keep the compressor running constantly, sounds odd but this method increases compressor life and reduces power dramatically.

Constantly turning a compressor on and off means a huge surge of power on each action, plus poor temperature control. See graph below, to control the accuracy to an unprecedented level we balance and control with a heater. This is controlled by a PID system offering top level control.

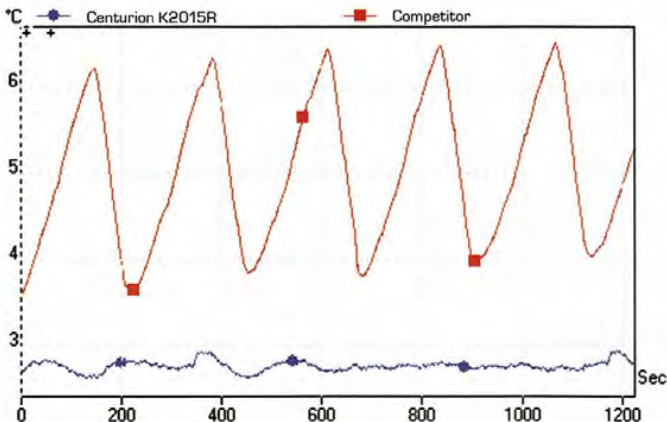
Why?

Imagine using a shower, you turn on both hot water and cold to reach your desired temperature. You would not stand in cold water, then hot to regulate temperature. By using both cold and hot we “balance” the set temperature. As we have been using this method for over 27 years it is a proven technology.

Proof

See the graph below.

Centurion is set at 3C and a well known competitor at 4C to differentiate. As you can clearly see our system has control and repeatability beyond our competition.



Contents

Mico Centrifuges to 0.2L

C115 A.B.C.D Ambient & C115R. A.B.C.D Refrigerated

Micro package centrifuge with micro rotor included for either 2ml, 0.5ml 0.2ml and PCR strip.

6

C106 A. B. Ambient & C106R A. B. Refrigerated

Micro package centrifuge with rotor included for 8x15ml or 4x50ml reducers available for 25ml 15ml 10ml and 5.0ml.

8

C113 Ambient Haematocrit centrifuge

Micro package centrifuge with rotor included for 24 capillary and 12x2ml in one rotor.

10

C104SO Ambient Centrifuge

Micro package centrifuge with mini swing rotor included for 8x5ml.

11

A compact unit offering swing capability at 5ml in a micro space saving unit for your lab.

Small Centrifuges to 0.5L

C204A Ambient & C204RA. Refrigerated

Small package centrifuge with swing-out rotor included (400ml max) available with over 40 different adapters making this unit a diverse unit capable of different sample types.

12

C206A Ambient & C206RA. Refrigerated

Small package centrifuge included with fixed angle rotor up to 6000rpm for 12x15ml & 6x50ml Reducers available for 25ml, 15ml, 10ml and 5.0ml.

16

Medium Centrifuges to 1L

C404A Ambient & C404RA. Refrigerated

Medium package centrifuge with swing-out rotor included (1000ml max) available with over 40 different adapters making this unit a diverse unit capable of different sample types.

18

C406A Ambient & C406RA. Refrigerated

Medium package centrifuge included with high capacity fixed angle rotor up to 6000rpm for 24x15ml & 8x50ml & 6x100ml Reducers available for 85ml, 50ml, 25ml, 15ml, 10ml and 5.0ml.

22

Large Centrifuges to 2L

C504A Ambient & C504RA. Refrigerated

2L package centrifuge with swing-out rotor included (2000ml max) available with over 40 different adapters making this unit a diverse unit capable of different sample types.

24

Large Centrifuges to 3L

C704A Ambient & C704RA. Refrigerated

3L package centrifuge with swing-out rotor included (3000ml max) available with over 40 different adapters making this unit a diverse unit capable of different sample types.

28

Floor Centrifuges to 4L

CFS4A Ambient & CFS4RA. Refrigerated

4L package floor standing centrifuge with swing-out rotor included (4000ml max) available with over 40

31

different adapters making this unit a diverse unit capable of different sample types.

C115 & C115R

6 Micro Centrifuges to 0.2Litre max Dual Centrifuges Complete with rotor

Display indicative only



PART NUMBERS (230V50/60HZ)

C115A with BRK5424 rotor
C115B with BRK5436 rotor
C115C with BRK5448 rotor
C115D with BRK5494 rotor

Display indicative only



PART NUMBERS (230V 50/60HZ)

C115RA with BRK5424 rotor
C115RB with BRK5436 rotor
C115RC with BRK5448 rotor
C115RD with BRK5494 rotor

PART NUMBERS (110V 60HZ)

1. C115RA with BRK5424 rotor
1. C115RB with BRK5436 rotor
1. C115RC with BRK5448 rotor
1. C115RD with BRK5494 rotor

Ambient Centrifuge

Speed	15,000 Rpm max (10Rpm steps)
Rcf Max	10 - 22,000G
Timer	0-9hours & Hold (30 sec steps)
Dims HWD	280 x 240 x 360mm
Weight	12.8 Kg (without rotor)
Power	125 Watts
Memory	99 programs
Accel rates	10 programs
Decel rates	10 programs

PART NUMBERS (110V 60HZ)

1.C115A with BRK5424 rotor
1.C115B with BRK5436 rotor
1.C115C with BRK5448 rotor
1.C115D with BRK5494 rotor

Refrigerated Centrifuge

Speed	15,000 Rpm max (10Rpm steps)
Rcf Max	10 - 22,000G
Timer	0-9hours & Hold (30 sec steps)
Dims HWD	320 x 280 x 575mm
Weight	41.8 Kg (without rotor)
Power	575 Watts
Memory	99 programs
Accel rates	10 programs
Decel rates	10 programs
Temp range	-20C to 40C PID controlled to +/- 1C

Micro rotors to 22,000 Rcf (G)



Sealed lid included

Rotor	BRK5424	BRK5436	BRK5448	BRK5494
Rotor type	24 x 2.2ml	36 x 0.5ml	48 x 0.2 to 0.4ml	4 x Pcr Strips
Tube size max	11 x 50mm	8 x 30mm	6 x 40mm	6 x 40mm
Minimum Rcf (G)	10	10	10	10
Maximum Rcf (G)	22,000	22,000	22,000	22,000
Maximum Rpm	15,000	15,000	15,000	15,000
Radius max cms	8.75cms	8.75cms	8.75cms	8.75cms
Sample tube angle °	45	45	45	45
Acceleration time (secs)	15	15	15	15
Deceleration time (secs)	15	15	15	15
Autoclavable (frequency)	121°C (10)	121°C (10)	121°C (10)	121°C (10)
Minimum Temperature @ 23°C	4°C	4°C	4°C	4°C

Reducers pack of 4

Rotor	BRK5424
Part number	RS04 (0.2- 0.4ml)
Tube size max	6 x 30mm
Part number	RS05 (0.5ml)
Tube size max	8 x 30mm

C106 & C106R

8 Micro Centrifuges to 0.2Litre max Dual Centrifuges Complete with rotor



Display indicative only

PART NUMBERS (230V 50/60HZ)

C106A with BRK5408 rotor
C106B with BRK5404 rotor

PART NUMBERS (110V 60HZ)

1. C106A with BRK5408 rotor
1. C106B with BRK5404 rotor

Ambient Centrifuge

Speed	6,000 Rpm max (10 Rpm steps)
Rcf Max	10 - 3,500 G
Timer	0-9hours & Hold (30 sec steps)
Dims HWD	280 x 240 x 360mm
Weight	12.8 Kg (without rotor)
Power	125 Watts
Memory	99 programs
Accel rates	10 programs
Decel rates	10 programs



Display indicative only

PART NUMBERS (230V 50/60HZ)

C106RA with BRK5408 rotor
C106RB with BRK5404 rotor

Refrigerated Centrifuge

Speed	6,000 Rpm (10 Rpm steps)
Rcf Max	10 - 3,500 G
Timer	0-9hours & Hold (30 sec steps)
Dims HWD	320 x 280 x 575mm
Weight	41.8 Kg (without rotor)
Power	575 Watts
Memory	99 programs
Accel rates	10 programs
Decel rates	10 programs
Temp range	-20C to 40C PID controlled to +/- 1C

PART NUMBERS (110V 60HZ)

1. C106RA with BRK5408 rotor
1. C106RB with BRK5404 rotor

Small Fixed angle rotors. 3,500 Rcf (G)



Sealed lid included

Rotor	BRK5408	BRK5404
Rotor type	8 x 15ml tube	4 x 50ml tube
Tube size max	17 x 120mm	30 x 115mm
Minimum Rcf (G)	10	10
Maximum Rcf (G)	3,500	3,500
Maximum Speed	6,000	6,000
Radius max cms	8.5	8.5
Sample tube angle °	30	30
Acceleration time (secs)	25	25
Deceleration time (secs)	25	25
Autoclavable (frequency)	121°C (10)	121°C (10)
Minimum Temperature @ 23°C	4°C	4°C

Reducers pack of 4

Rotor	BRK5408/5404
Part number	RM05 (5ml)
Tube size max	13 x 80mm
Part number	RM10 (10ml)
Tube size max	16 x 100mm

Reducers pack of 4

Rotor	BRK5404
Part number	RM25 (25ml)
Tube size max	24 x 100mm
Part number	RM15 (15ml)
Tube size max	17 x 100mm

10 Micro Centrifuge with Haematocrit rotor

Dual Rotor Centrifuge Complete with rotor



Display indicative only

PART NUMBERS

C113 (230V50/60Hz)

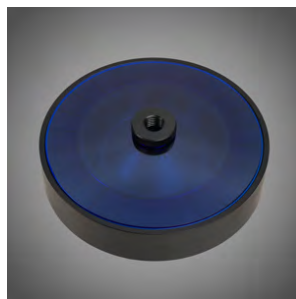
Ambient Centrifuge

Speed	13,000 Rpm max (10 Rpm steps)
Rcf Max	10 - 15,800 G
Timer	0-9hours & Hold (30 sec steps)
Dims HWD	280 x 240 x 360mm
Weight	12.8 Kg (without rotor)
Power	125 Watts
Memory	99 programs
Accel rates	10 programs
Decel rates	10 programs

PART NUMBERS

1.C113 (110V 60Hz)

Rotor	BRK5401
Rotor type	24 x capillary & 12 x 2ml
Tube size max	2 x 75mm & 11 x 40mm
Minimum Rcf (G)	10
Maximum Rcf (G)	15,800
Maximum Speed	13,000
Radius max cms	8.4
Sample tube angle °	0 & 60
Acceleration time (secs)	25
Deceleration time (secs)	25
Autoclavable (frequency)	121°C (10)
Minimum Temperature @ 23°C	4°C



See Page 9 for consumables

Micro Centrifuge with Swing out rotor Dual Rotor Centrifuge complete with rotor

Display indicative only



Ambient Centrifuge

Speed	4,000 Rpm max (10 Rpm steps)
Rcf Max	10 - 1500 G
Timer	0-9hours & Hold (30 sec steps)
Dims HWD	280 x 240 x 360mm
Weight	12.8 Kg (without rotor)
Power	125 Watts
Memory	99 programs
Accel rates	10 programs
Decel rates	10 programs

PART NUMBERS

C104SO (230V50/60Hz)

PART NUMBERS

1.C104SO (110V 60Hz)

BRK5508S Swing out rotor

Capacity	8 x 5ml
Tube size	13 x 82mm max
Minimum Rcf (G)	10
Maximum Rcf (G)	1,500
Maximum Speed	4,000
Radius max cms	9.0
Sample tube angle °	0
Acceleration time (secs)	15
Deceleration time (secs)	15
Autoclavable (frequency)	121°C (10)
Minimum Temperature @ 23°C	4°C



Small Centrifuges to 0.5Litre max Dual Centrifuge Complete with rotor

Display indicative only



PART NUMBERS

C204A (230V/50/60Hz)
1.C204A (110V 60Hz)

Ambient Centrifuge

Speed	4,000 Rpm max (10 Rpm steps)
Rcf Max	10 - 2,200 G
Timer	0 -9hours & Hold (30 sec steps)
Dims HWD	320 x 350 x 470mm
Weight	22.8 Kg (without rotor)
Power	175 Watts
Memory	99 programs
Accel rates	10 programs
Decel rates	10 programs

Display indicative only



PART NUMBERS

C204RA (230V 50/60Hz)
1.C204RA (110V 60 Hz)

Refrigerated Centrifuge

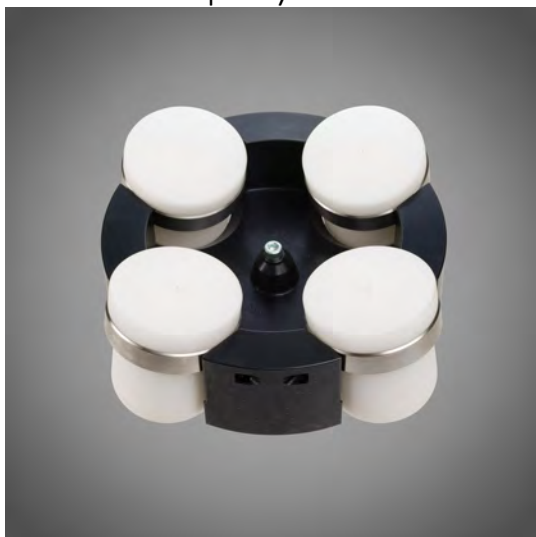
Speed	4,000 Rpm max (10 Rpm steps)
Rcf Max	10 - 2,200 G
Timer	0 -9hours & Hold (30 sec steps)
Dims HWD	325 x 360 x 610mm
Weight	45.8 Kg (without rotor)
Power	575 Watts
Memory	99 programs
Accel rates	10 programs
Decel rates	10 programs
Temp range	-20C to 40C PID controlled to +/- 1C

Swing out Rotor 4 x 125ml Max. 2,200 Rcf (G)

13

BRK5506

500ml max capacity



Optional B5519 sealed lids available

Adaptors required see following page

Rotor	BRK5506 & Adaptors (set 4) Shown REQUIRED see chart
Tube size max	45 x 100mm
Minimum Rcf (G)	10
Maximum Rcf (G)	2,200
Maximum Speed	4,000Rpm
Radius max cms	12.3cm
Sample tube angle °	0
Acceleration time (secs)	30
Deceleration time (secs)	30
Autoclavable (frequency)	121°C (20)
Minimum Temperature @ 23°C	4°C

Adaptors for Swing out rotor BRK5506 Pack of 4

Capacity	Size. mm	Part Number	Tubes per rotor
Tube type: Micro with cap. Shape: Point			
0.5ml	8 x 20	AM405-5	52
1.5ml	11 x 38	AM420-5	36
2.0ml	11 x 38	AM420-5	36
0.2ml	6 x 20	AM402-5	96
0.4ml	6 x 30	AM404-5	96
Tube type: Plain no cap. Shape: Round			
1ml	6 x 45	AR401-5	36
3ml	10 x 60	AR403-5	28
5ml	12 x 75	AR405-5	20
6ml	12 x 82	AR405-5	20
7ml	12 x 100	AR407-5	20
9/10ml	14 x 100	AR409-5	20
15ml	17 x 100	AR415-5	16
25ml	24 x 100	AR425-5	12
50ml	34 x 100	AR450-5	4
100ml	45 x 100	AR4100-5	4
125ml	52 x 100	AR4125-5	4
Tube type: Falcon with cap. Shape: Point			
15ml	17 x 120	AF415-5	4
50ml	29 x 115	AF450-5	4
Tube type: Falcon with cap. Shape: Square			
12ml	17 x 100	AFS412-5	8
15ml	17 x 120	AFS415-5	4
25ml	25 x 90	AFS425-5	4
30ml	25 x 110	AFS430-5	4
50ml	29 x 115	AFS450-5	4
Tube type: Nalgene. Oakridge with cap. Shape: Round			
10ml	15 x 80	ANO410-5	12
30ml	26 x 95	ANO430-5	4
50ml	29 x 107	ANO450-5	4
100ml	38 x 106	ANO4100-5	R
Tube type: Monovette. Shape Square			
1.1-1.4ml	8 x 82	AM4014-5	40
2.7-3ml	11 x 82	AM403-5	40
2.6-2.9ml	13 x 81	AM429-5	28
4.5-5ml	11 x 108	AM403-5	32
7.5-8.2ml	13 x 106	AM479-5	24
4.5-5ml	15 x 92	AM450-5	20
9-10ml	16 X 108	AM490-5	16
Tube type: Vacutainer. Shape: Round			
1.6-5ml	13 x 82	AV416-5	24
4-7ml	13 x 106	AV450-5	24
7-9ml	15 x 92	AV470-5	20
8.5-10ml	16 x 108	AV480-5	16
Tube type: Vacuette. Shape: Round			
1.6-5ml	13 x 82	AV416-5	24
4-7ml	13 x 106	AV450-5	24
7-9ml	15 x 92	AV470-5	20
8.5-10ml	16 x 108	AV480-5	16



Notes

C206 & C206R

16

Small Centrifuges to 0.5Litre max Dual Centrifuge Complete with rotor



PART NUMBERS (230V 50/60HZ)

C206A with BRK5412 rotor
C206B with BRK5406 rotor

Display indicative only



PART NUMBERS (230V 50/60HZ)

C206RA with BRK5412 rotor
C206RB with BRK5406 rotor

Ambient Centrifuge

Speed	6,000 Rpm max (10 Rpm steps)
Rcf Max	10 - 3,800 G
Timer	0-9hours & Hold (30 sec steps)
Dims HWD	320 x 350 x 470mm
Weight	22.8 Kg (without rotor)
Power	175 Watts
Memory	99 programs
Accel rates	10 programs
Decel rates	10 programs

PART NUMBERS (110V 60HZ)

1.C206A with BRK5412 rotor
1.C206B with BRK5406 rotor

Refrigerated Centrifuge

Speed	6,000 Rpm (10 Rpm steps)
Rcf Max	10 - 3,800 G
Timer	0-9hours & Hold (30 sec steps)
Dims HWD	325 x 360 x 610mm
Weight	45.8 Kg (without rotor)
Power	575 Watts
Memory	99 programs
Accel rates	10 programs
Decel rates	10 programs
Temp range	-20C to 40C PID controlled to +/- 1C

PART NUMBERS (110V 60HZ)

1. C206RA with BRK5412 rotor
1. C206RB with BRK5406 rotor

Medium fixed angle rotors to 3,800 Rcf (G)



Sealed lid included

Rotor	BRK5412	BRK5406
Rotor type	12 x 15ml	6 x 50m
Tube size max	17 x 120mm	30 x 120mm
Minimum Rcf (G)	10	10
Maximum Rcf (G)	3,800	3,800
Maximum Speed	4,000	4,000
Radius max cms	9.5	9.5
Sample tube angle °	30	30
Acceleration time (secs)	25	25
Deceleration time (secs)	25	25
Autoclavable (frequency)	121°C (10)	121°C (10)
Minimum Temperature @ 23°C	4°C	4°C

Reducers pack of 4

Rotor	BRK5412
Part number	RM05 (5ml)
Tube size max	13 x 80mm
Part number	RM10 (10ml)
Tube size max	16 x 100mm

Reducers pack of 4

Rotor	BRK5406
Part number	RM15 (15ml)
Tube size max	17 x 120mm
Part number	RM25 (25ml)
Tube size max	25 x 100mm

C404A & C404RA

18

Medium Centrifuges to 1.0 Litre max Dual Centrifuges Complete with rotor

Display indicative only



PART NUMBERS

C404A (230V/50/60Hz) 1.C404A (110V 60Hz)

Ambient Centrifuge

Speed	4,000 Rpm max (10 Rpm steps)
Rcf Max	10 - 2,600 G
Timer	0 -9hours & Hold (30 sec steps)
Dims HWD	340 x 400 x 520mm
Weight	25.8 Kg (without rotor)
Power	275 Watts
Memory	99 programs
Accel rates	10 programs
Decel rates	10 programs

Display indicative only



PART NUMBERS

C404RA (230V 50/60Hz)
1.C404RA (110V 60 Hz)

Refrigerated Centrifuge

Speed	4,000 Rpm max (10 Rpm steps)
Rcf Max	10 - 2,600 G
Timer	0 -9hours & Hold (30 sec steps)
Dims HWD	330 x 435 x 650mm
Weight	57.8 Kg (without rotor)
Power	625 Watts
Memory	99 programs
Accel rates	10 programs
Decel rates	10 programs
Temp range	-20C to 40C PID controlled to +/- 1C

Swing out Rotor 4 x 250ml Max. 2,600 Rcf (G)

19

BRK1001

1 Litre max capacity



B5251 Bucket (set 4) REQUIRED.
250ml max per Bucket I



Shown with optional B5519 sealed lids

Adaptors required see the following page

Rotor/Buckets	BRK1001. B5251 Buckets
Tube size max	62 x 100mm
Minimum Rcf (G)	10
Maximum Rcf (G)	2,600
Maximum Speed Rpm	4,000
Radius max cms	14.6cm
Sample tube angle °	0
Acceleration time (secs)	35
Deceleration time (secs)	35
Autoclavable (frequency)	121°C (20)
Minimum Temperature @ 23°C	4°C

Adaptors for Swing out rotor BRK1001.

With B5251 buckets Pack of 4

Capacity	Size. mm	Part Number	Tubes per rotor
----------	----------	-------------	-----------------

Tube type: Micro with cap. **Shape:** Point

0.5ml	8 x 20	AM605-1	104
1.5ml	11 x 38	AM620-1	72
2.0ml	11 x 38	AM620-1	72
0.2ml	6 x 20	AM602-1	144
0.4ml	6 x 30	AM604-1	144

Tube type: Plain no cap. **Shape:** Round

1ml	6 x 45	AR601-1	36
3ml	10 x 60	AR603-1	28
5ml	12 x 75	AR605-1	20
6ml	12 x 82	AR605-1	20
7ml	12 x 100	AR607-1	20
9/10ml	14 x 100	AR609-1	20
15ml	17 x 100	AR615-1	16
25ml	24 x 100	AR625-1	12
50ml	34 x 100	AR650-1	4
100ml	45 x 100	AR6100-1	4
125ml	52 x 100	AR6150-1	4

Tube type: Falcon with cap. **Shape:** Point

15ml	17 x 120	AF615-1	16
50ml	29 x 115	AF650-1	4

Tube type: Falcon with cap. **Shape:** Square

12ml	17 x 100	AFS612-1	12
15ml	17 x 120	AFS615-1	12
25ml	25 x 90	AFS625-1	4
30ml	25 x 110	AFS630-1	4
50ml	29 x 115	AFS6100-1	4

Tube type: Nalgene. Oakridge with cap. **Shape:** Round

10ml	15 x 80	ANO610-1	20
30ml	26 x 95	ANO630-1	4
50ml	29 x 107	ANO650-1	4
100ml	38 x 106	ANO685-1	4

Tube type: Nalgene. Oakridge with cap. **Shape:** Flat

250ml	62 x 125	AC62130	4
-------	----------	---------	---

Tube type: Monovette. **Shape:** Square

1.1-1.4ml	8 x 82	AM6014-1	52
2.7-3ml	11 x 82	AM603-1	52
2.6-2.9ml	13 x 81	AM629-1	28
4.5-5ml	11 x 108	AM603-1	52
7.5-8.2ml	13 x 106	AM679-1	28
4.5-5ml	15 x 92	AM650-1	20
9-10ml	16 X 108	AM690-1	20

Tube type: Vacutainer. **Shape:** Round

1.6-5ml	13 x 82	AV616-1	28
4-7ml	13 x 106	AV650-1	28
7-9ml	15 x 92	AV670-1	16
8.5-10ml	16 x 108	AV680-1	16

Tube type: Vacuette. **Shape:** Round

1.6-5ml	13 x 82	AV616-1	28
4-7ml	13 x 106	AV650-1	28
7-9ml	15 x 92	AV670-1	16
8.5-10ml	16 x 108	AV680-1	16



Notes

C406 & C406R

Medium Centrifuges to 1.0Litre max Dual Centrifuges Complete with rotor

22



PART NUMBERS (230V 50/60HZ)

C406A with BRK5324 rotor
C406B with BRK5308 rotor
C406C with BRK5100 rotor

Ambient Centrifuge

Speed	6,000 Rpm max (10 Rpm steps)
Rcf Max	10 - 4,800 G
Timer	0-9hours & Hold (30 sec steps)
Dims HWD	340 x 400 x 520mm
Weight	25.8 Kg (without rotor)
Power	275 Watts
Memory	99 programs
Accel rates	10 programs
Decel rates	10 programs

PART NUMBERS (110V 60HZ)

1. C406A with BRK5324 rotor
1. C406B with BRK5308 rotor
1. C406C with BRK5100 rotor



Refrigerated Centrifuge

Speed	6,000 Rpm max (10 Rpm steps)
Rcf Max	10 - 4,800 G
Timer	0-9hours & Hold (30 sec steps)
Dims HWD	330 x 435 x 650mm
Weight	57.8 Kg (without rotor)
Power	625 Watts
Memory	99 programs
Accel rates	10 programs
Decel rates	10 programs
Temp range	-20C to 40C PID controlled to +/- 1C

PART NUMBERS (230V 50/60HZ)

C406RA with BRK5324 rotor
C406RB with BRK5308 rotor
C406RC with BRK5100 rotor

PART NUMBERS (110V 60HZ)

1. LC406RA with BRK5324 rotor
1. C406RB with BRK5308 rotor
1. C406RC with BRK5100 rotor

Large fixed angle rotors to 4,800 Rcf (G)



Sealed lid included

Rotor	BRK5324	BRK5308	BRK5100
Rotor type	24 x 15ml	8 x 50ml	6 x 100ml
Tube size max	17 x 120mm	30 x 120mm	38 x 125mm
Minimum Rcf (G)	10	10	10
Maximum Rcf (G)	4,800	4,800	4,800
Maximum Speed	6,000	6,000	6,000
Radius max cms	12	12	12
Sample tube angle °	30	30	30
Acceleration time (secs)	30	30	30
Deceleration time (secs)	35	35	35
Autoclavable (frequency)	121°C (10)	121°C (10)	121°C (10)

Refrigerated Centrifuges Only

Minimum Temperature	4°C	4°C	4°C
---------------------	-----	-----	-----

At maximum speed (relative to room temperature at 23°C)

Reducers pack of 4

Rotor	BRK5324	BRK5308	BRK5100
Part number	RM05 (5ml)	RM15 (15ml)	RL10 (10ml)
Tube size max	13 x 80mm	17 x 120mm	16 x 100mm
Part number	RM10 (10ml)	RM25 (25ml)	RL 15 (15ml)
Tube size max	16 x 100mm	25 x 100mm	17 x 120mm
			RL25 (25ml)
			25 x 100mm
			RL50 (50ml)
			RL85 (85ml)
			35 x 110mm
			39 x 110mm

C504A & C504RA

Large Centrifuges to 2Litre max Dual Centrifuges

24

Complete with Swing out rotor BRK3000, B2001 Buckets (adaptors required)



Display's indicative only

Ambient Centrifuge

Speed	4,000 Rpm max (10 Rpm steps)
Rcf Max	10 - 3,600 G
Timer	0 -9hours & Hold (30 sec steps)
Dims HWD	375 x 540 x 620mm
Weight	54.5 Kg (without rotor)
Power	750 Watts
Memory	99 programs
Accel rates	10 programs
Decel rates	10 programs

C504A C504A. (230V 50/60Hz)
1.C504A. (110V 60Hz)



Refrigerated Centrifuge

Speed	4,000 Rpm max (10 Rpm steps)
Rcf Max	10 - 3,600 G
Timer	0 -9hours & Hold (30 sec steps)
Dims HWD	410 x 825 x 650mm
Weight	87 Kg (without rotor)
Power	1200 Watts
Memory	99 programs
Accel rates	10 programs
Decel rates	10 programs
Temp range	-9C to 40C PID controlled to +/- 1C

C504RA. C504RA.(230V50/60Hz)
1.C504RA. (110V 60Hz)

Swing out Rotor 4 x 500ml Max. 3,600 Rcf (G)

25

BRK3000

2 Litre max capacity

B52001 Bucket (set 4) REQUIRED.
500ml max per Bucket



Shown with optional B5319 sealed lids

Adaptors required see following page

Rotor/Buckets	BRK3000. B2001 Buckets
Tube size max	98 x 160mm
Minimum Rcf (G)	10
Maximum speed	4000Rpm
Maximum Rcf (G)	3600
Radius max cms	20.5
Sample tube angle °	0
Acceleration time (secs)	40
Deceleration time (secs)	40
Autoclavable (frequency)	121°C (20)
Minimum Temperature @ 23°C	4°C

Adaptors for Buckets. B2001 Pack of 4

Capacity	Size. mm	Part Number	Tubes per rotor
Tube type: Micro with cap. Shape: Point			
0.5ml	8 x 20	AM805-2	144
1.5ml	11 x 38	AM820-2	92
2.0ml	11 x 38	AM820-2	92
0.2ml	6 x 20	AM802-2	168
0.4ml	6 x 30	AM804-2	168
Tube type: Plain no cap. Shape: Round			
1ml	6 x 45	AR801-2	168
3ml	10 x 60	AR803-2	96
5ml	12 x 75	AR805-2	96
6ml	12 x 82	AR805-2	96
7ml	12 x 100	AR807-2	96
9/10ml	14 x 100	AR809-2	84
15ml	17 x 100	AR815-2	48
25ml	24 x 100	AR825-2	28
50ml	34 x 100	AR850-2	16
100ml	45 x 100	AR8100-2	8
150ml	52 x 100	AR8150-2	4
250ml	62 x 100	AR8250-2	4
Tube type: Falcon with cap. Shape: Point			
15ml	17 x 120	AF815-2	28
50ml	29 x 115	AF850-2	16
175ml	61 x 118	AF8175-2	4
Tube type: Falcon with cap. Shape: Square			
12ml	17 x 100	AFS812-2	48
15ml	17 x 120	AFS815-2	28
25ml	25 x 90	AFS825-2	20
30ml	25 x 110	AFS830-2	16
50ml	29 x 115	AFS850-2	12
Tube type: Corning with cap. Shape: point			
250ml	60 x 172	AF8250-2	4
500ml	98 x 148	AF8500-2	4
Tube type: Nalgene. Oakridge with cap. Shape: Round			
10ml	15 x 80	ANO810-2	64
30ml	26 x 95	ANO830-2	20
50ml	29 x 107	ANO850-2	12
100ml	38 x 106	ANO8100-2	12
250ml	62 x 133	ANO8250-2	4
Tube type: Nalgene. Oakridge with cap. Shape: Square			
250ml	62 x 130	ANO8251-2	4
500ml	98 x 148	AH2695R	4 No lid
Tube type: Monovette. Shape Square			
1.1-1.4ml	8 x 82	AM8014-2	96
2.7-3ml	11 x 82	AM803-2	76
2.6-2.9ml	13 x 81	AM829-2	68
4.5-5ml	11 x 108	AM804-2	76
7.5-8.2ml	13 x 106	AM879-2	68
4.5-5ml	15 x 92	AM850-2	64
9-10ml	16 X 108	AM890-2	64
Tube type: Vacutainer. Shape: Round also Vacuette			
1.6-5ml	13 x 82	AV816-2	76
4-7ml	13 x 106	AV850-2	76
7-9ml	15 x 92	AV870-2	64
8.5-10ml	16 x 108	AV880-2	64



Refrigerated Centrifuges

Dynamics rooted in innovation

Accuracy and control using less power.

How?

Centurion Scientific Ltd keep the compressor running constantly, Sounds odd, but this method increases compressor life and reduces power dramatically. Constantly turning a compressor on and off means a huge surge of power on each action, plus poor temperature control. See graph below to control the accuracy to an unprecedented level we balance and control with a heater. This is controlled by a PID system offering top level control.

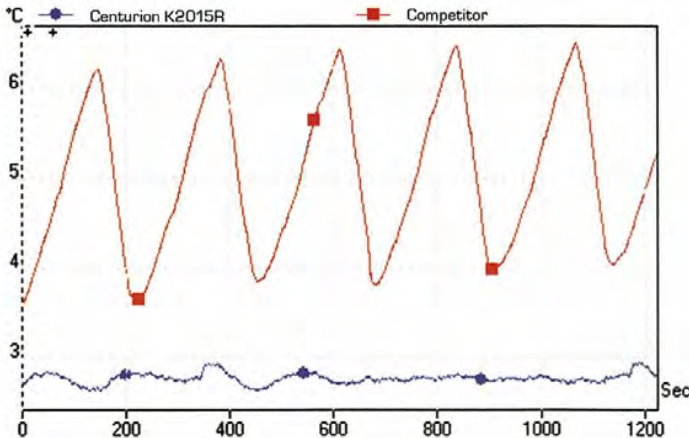
Why?

Imagine using a shower, you turn on both Hot water and cold to reach your desired temperature. You would not stand in cold water, then hot to regulate temperature. By using both cold and hot we “balance” the set temperature As we have been using this method for over 27 years it is a proven technology.

Proof

See the graph below.

Centurion is set at 3C and a well known competitor at 4C to differentiate. As you can clearly see our system has control and repeatability beyond our competition



C704A & C404RA

Large Centrifuges to 3Litre max Dual Centrifuges

28

Complete with Swing out rotor BRK3000, B3001 Buckets (adaptors required)

Display's indicative only



Ambient Centrifuge

Speed	4,000 Rpm max(10 Rpm steps)
Rcf Max	10 - 4,000 G
Timer	0-9hours & Hold (30 sec steps)
Dims HWD	375 x 575 x 660mm
Weight	59 Kg (without rotor)
Power	750 Watts
Memory	99 programs
Accel rates	10 programs
Decel rates	10 programs

C704A

C704A. (230V 50/60Hz). 1.C704A. (110V 60Hz)



Refrigerated Centrifuge

Speed	4,000 Rpm max(10 Rpm steps)
Rcf Max	10 - 4,000 G
Timer	0-9hours & Hold (30 sec steps)
Dims HWD	410 x 845 x 660mm
Weight	105 Kg (without rotor)
Power	1200 Watts
Memory	99 programs
Accel rates	10 programs
Decel rates	10 programs
Temp range	-9C to 40C PID controlled to +/- 1C

C704RA

C704RA.(230V50/60Hz).
1.C704RA. (110V 60Hz)

Swing out Rotor 4 x 750ml Max. 4,000 Rcf (G)

BRK3000

3 Litre max capacity



B3001 Bucket (set 4) REQUIRED.
750ml max per Bucket!



Shown with optional B5319 sealed lids

Adaptors required see following page

Rotor/Buckets	BRK3000. B3001 Buckets
Tube size max	98 x 170mm
Minimum Rcf (G)	10
Maximum Rcf (G)	4000
Maximum Speed	4000Rpm
Radius max cms	22.5
Sample tube angle °	0
Acceleration time (secs)	45
Deceleration time (secs)	45
Autoclavable (frequency)	121°C (20)
Minimum Temperature @ 23°C	4°C

Adaptors for Buckets. B3001 Pack of 4

Capacity	Size. mm	Part Number	Tubes per rotor
Tube type: Micro with cap. Shape: Point			
0.5ml	8 x 20	AM805-3	288
1.5ml	11 x 38	AM820-3	184
2.0ml	11 x 38	AM820-3	184
0.2ml	6 x 20	AM802-3	336
0.4ml	6 x 30	AM804-3	336
Tube type: Plain no cap. Shape: Round			
1ml	6 x 45	AR801-3	168
3ml	10 x 60	AR803-3	96
5ml	12 x 75	AR805-3	96
6ml	12 x 82	AR805-3	96
7ml	12 x 100	AR807-3	96
9/10ml	14 x 100	AR809-3	84
15ml	17 x 100	AR815-3	48
25ml	24 x 100	AR825-3	28
50ml	34 x 100	AR850-3	16
100ml	45 x 100	AR8100-3	8
150ml	52 x 100	AR8150-3	4
250ml	62 x 100	AR8250-3	4
Tube type: Falcon with cap. Shape: Point			
15ml	17 x 120	AF815-3	36
50ml	29 x 115	AF850-3	20
125ml	61 x 118	AF8175-3	4
Tube type: Falcon with cap. Shape: Square			
12ml	17 x 100	AFS812-3	48
15ml	17 x 120	AFS815-3	36
25ml	25 x 90	AFS825-3	24
30ml	25 x 110	AFS830-3	24
50ml	29 x 115	AFS850-3	20
Tube type: Corning with cap. Shape: point			
250ml	60 x 172	AF8250-3	4
500ml	98 x 148	AF8500-3	4
Tube type: Nalgene. Oakridge with cap. Shape: Round			
10ml	15 x 80	ANO810-3	64
30ml	26 x 95	ANO830-3	24
50ml	29 x 107	ANO850-3	20
100ml	38 x 106	ANO8100-3	12
250ml	62 x 133	ANO8250-3	4
Tube type: Nalgene. Oakridge with cap. Shape: Square			
250ml	60 x 172	ANO8252-3	4
500ml	98 x 148	ANO8500-3	4
750ml	60 x 160	ANO8750-3	4 No lid
Tube type: Monovette. Shape Square			
1.1-1.4ml	8 x 82	AM8014-3	112
2.7-3ml	11 x 82	AM803-3	76
2.6-2.9ml	13 x 81	AM829-3	76
4.5-5ml	11 x 108	AM804-3	76
7.5-8.2ml	13 x 106	AM879-3	76
4.5-5ml	15 x 92	AM850-3	64
9-10ml	16 X 108	AM890-3	64
Tube type: Vacutainer. Shape: Round also Vacuette			
1.6-5ml	13 x 82	AV816-3	76
4-7ml	13 x 106	AV850-3	76
7-9ml	15 x 92	AV870-3	64
8.5-10ml	16 x 108	AV880-3	64



Floor Centrifuge to 4Litre max Dual rotor Centrifuges

Complete with rotor BRK3000, B4000 buckets (adaptors required)

CFS4A/R Floor Standing Centrifuge (4L Max)



Display indicative only

CFS4A Ambient

CFS4A.(230V 50/60Hz). 1.CFS4A.(110V 60Hz)

Speed	4,000 Rpm max(10 Rpm steps)
Rcf Max	10 - 4,500 G
Timer	0-9hours & Hold (30 sec steps)
Dims HWD	1000 x 575 x 660mm
Weight	80 Kg (without rotor)
Power	750 Watts
Memory	99 programs
Accel rates	10 programs
Decel rates	10 programs

CFS4RA Refrigerated

CFS4RA.(230V 50/60Hz). 1.CFS4RA.(110V 60Hz).

Speed	4,000 Rpm (10 Rpm steps)
Rcf Max	10 - 4,500 G
Timer	0-9hours & Hold (30 sec steps)
Dims HWD	1000 x 575 x 660mm
Weight	125 Kg (without rotor)
Power	1200 Watts
Memory	99 programs
Accel rates	10 programs
Decel rates	10 programs
Temp	-9°C to + 40°C PID Controlled to + / - 1°C

The following pages show available rotors.

Swing out Rotor 4 x 1000ml Max. 4,500 Rcf (G)

BRK3000

4 Litre max capacity



B4001 Bucket (set 4) REQUIRED.
1000ml max per Bucket



Shown with optional B5319 sealed lids

Adaptors required see following page

Rotor/Buckets	BRK3000. B4001 Buckets
Tube size max	98 x 180mm
Minimum Rcf (G)	10
Maximum Speed	4000Rpm
Maximum Rcf (G)	4500
Radius max cms	25.5
Sample tube angle °	0
Acceleration time (secs)	60
Deceleration time (secs)	60
Autoclavable (frequency)	121°C (20)
Minimum Temperature @ 23°C	4°C

Adaptors for Buckets. B4001 Pack of 4

Capacity	Size. mm	Part Number	Tubes per rotor
Tube type: Micro with cap. Shape: Point			
0.5ml	8 x 20	AM805-4	288
1.5ml	11 x 38	AM820-4	184
2.0ml	11 x 38	AM820-4	184
0.2ml	6 x 20	AM802-4	336
0.4ml	6 x 30	AM804-4	336
Tube type: Plain no cap. Shape: Round			
1ml	6 x 45	AR801-4	168
3ml	10 x 60	AR803-4	96
5ml	12 x 75	AR805-4	96
6ml	12 x 82	AR805-4	96
7ml	12 x 100	AR807-4	96
9/10ml	14 x 100	AR809-4	84
15ml	17 x 100	AR815-4	48
25ml	24 x 100	AR825-4	28
50ml	34 x 100	AR850-4	16
100ml	45 x 100	AR8100-4	8
125ml	52 x 100	AR8150-4	4
250ml	62 x 100	AR8250-4	4
Tube type: Falcon with cap. Shape: Point			
15ml	17 x 120	AF815-4	36
50ml	29 x 115	AF850-4	24
175ml	61 x 118	AF8175-4	4
Tube type: Falcon with cap. Shape: Square			
12ml	17 x 100	AFS812-4	48
15ml	17 x 120	AFS815-4	36
25ml	25 x 90	AFS825-4	28
30ml	25 x 110	AFS830-4	28
50ml	29 x 115	AFS850-4	24
Tube type: Corning with cap. Shape: point			
250ml	60 x 172	AF8250-4	4
500ml	98 x 148	AF8500-4	4
Tube type: Nalgene. Oakridge with cap. Shape: Round			
10ml	15 x 80	ANO810-4	64
30ml	26 x 95	ANO830-4	28
50ml	29 x 107	ANO850-4	24
100ml	38 x 106	ANO8100-4	12
250ml	62 x 133	ANO8250-4	4
Tube type: Nalgene. Oakridge with cap. Shape: Square			
250ml	60 x 172	ANO8252-4	4
500ml	98 x 148	ANO8500-4	4
750ml	60 x 160	ANO8750-4	4
1000ml	98 x 170	AS98148S	4
Tube type: Monovette. Shape Square			
1.1-1.4ml	8 x 82	AM801-4	112
2.7-3ml	11 x 82	AM803-4	76
2.6-2.9ml	13 x 81	AM829-4	76
4.5-5ml	11 x 108	AM804-4	76
7.5-8.2ml	13 x 106	AM879-4	76
4.5-5ml	15 x 92	AM850-4	64
9-10ml	16 X 108	AM890-4	64
Tube type: Vacutainer. Shape: Round also Vacuette			
1.6-5ml	13 x 82	AV816-4	76
4-7ml	13 x 106	AV850-4	76
7-9ml	15 x 92	AV870-4	64
8.5-10ml	16 x 108	AV880-4	64



Notes

Why Does my Centrifuge and accessories need servicing?

A yearly service validates your warranty. As with every appliance you purchase servicing extends the lifetime of the product and negates the need for constant replacement. Which in turn equals money saving.

We appreciate how hard your Centrifuge is used and how it is an imperative tool for your laboratory.

Downtime is therefore not acceptable

However if it is regularly maintained you improve its reliability and extend its life Our Pro-Care parts offer you all that is needed to service our Centrifuges correctly. Full instructions on replacement and any necessary adjustments are included

Using a third party service company without training and the correct parts is not acceptable. All our distributors, for products sold outside of the UK have received training and authority to service our centrifuges.

NOTE

Centrifuges can be dangerous.

Although Centurion Scientific Ltd has an exceptional reputation , if a rotor lid or poor seals are not replaced regularly, breakage, can result in severe damage further.

Servicing of our Centrifuges are also a requirement to validate your warranty, authorised distributors and Centurion Scientific Ltd parts are to be used.

Please be sure to contact the sales team for full parts pricing and further information .

Call us on: Tel +44(0)2392 631225
Email: sales@centurionscientific.co.uk

WWW.Servicepro-care.com

Call us on: Tel +44(0)2392 631225
or email

General: info@centurionscientific.co.uk

Sales: sales@centurionscientific.co.uk

Head Office

The Old Stables
Church Farm
Stoughton
Chichester
West Sussex
PO18 9JL
United Kingdom.

www.PrO-analyticalcentrifuge.com

Research & service

The Old equine Barn
Church Farm
Stoughton
Chichester
PO18 9JL. UK

**Ambient
manufacturing**

The Old Grain Barn
Church Farm
Stoughton
Chichester
PO18 9JL. UK

**Refrigeration
Manufacturing**

The Old Drier Barn
Church Farm
Stoughton
Chichester
PO18 9JL. UK

Logistics

The Old Storage Barn
Church Farm
Stoughton
Chichester
PO18 9JL. UK

Distributed by

Follow Centurion Scientific

